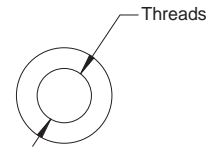
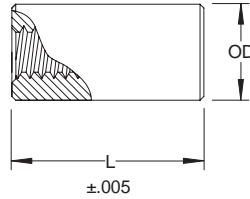


RST - Mechanical Standoff

Round Standoff
Inch

Sample Part Number

RST1/2 - 256 x .125 - STL - Z
Series OD Thread Length Material Finish



Thread	OD Outside Diameter					
	1/8	3/16	1/4	5/16	3/8	1/2
2 - 56						
4 - 40						
6 - 32						
8 - 32						
10 - 32						
12 - 24						
1/4 - 20						

Custom sizes available.

L Length
.125
.167
.250
.312
.375
.437
.500
.562
.625
.678
.750
.812
.875
.937
1.000
1.125
1.187
1.312
1.376
1.312
1.437
1.500
1.582
1.625
1.687
1.750
1.812
1.875
1.937
2.000

Material	Description
STL	Carbon Steel
SS	300 Series Stainless Steel
AL	Aluminum
BR	Brass
NY	Nylon
VO	Nylon 94 V-O

Finish	Description
Z	Zinc - Clear Chromate
Z-BLK	Zinc - Black Chromate
Z-YEL	Zinc - Yellow Chromate
NI	Nickel
BLK-OX	Blk Oxide
ALOD	Alodine
ALOD-GOLD	Alodine Gold
P	Passivate
PLN	Plain
TIN	Tin (Soldering)

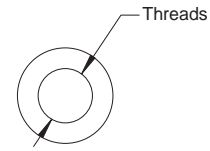
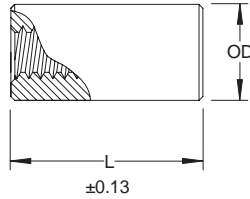
Custom finishes available.

RST - Mechanical Standoff

Round Standoff
Metric

Sample Part Number

RST4.5 - M2.5 x 25 - STL - Z
Series OD Thread Length Material Finish



Thread	OD Outside Diameter				
	4.5	6	8	10	13
M2.5 x 0.45					
M3.0 x 0.5					
M3.5 x 0.6					
M4.0 x 0.7					
M5.0 x 0.8					
M6.0 x 1.0					

Custom sizes available.

L Length
3
4
5
6
8
10
11
12
13
14
16
19
20
22
25

Material	Description
STL	Carbon Steel
SS	300 Series Stainless Steel
AL	Aluminum
BR	Brass
NY	Nylon
VO	Nylon 94 V-O

Finish	Description
Z	Zinc - Clear Chromate
Z-BLK	Zinc - Black Chromate
Z-YEL	Zinc - Yellow Chromate
NI	Nickel
BLK-OX	Blk Oxide
ALOD	Alodine
ALOD-GOLD	Alodine Gold
P	Passivate
PLN	Plain
TIN	Tin (Soldering)

Custom finishes available.

All Dimensions are in Metric

For Promotional Use Only!