



# PHZ

## Press-in Hex Zert

"Press-in Hex Zert" is designed to be installed into thermoplastics, by cold press-in. The hexagonal barbed design gives exceptional pull-out and torque performance. For additional performance, the insert can be installed by heat or ultra-sonics. *Performance values are on page 36.*

### Plastic Materials

ABS	PP
PA-Unfilled	PE
POM (Acetal)	HDPE
PVC	

### Installation

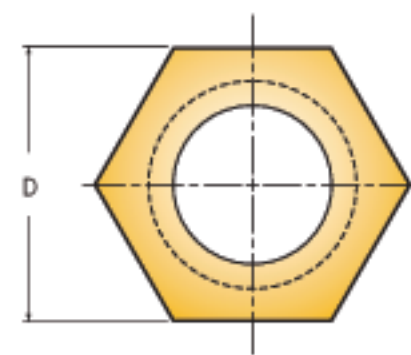
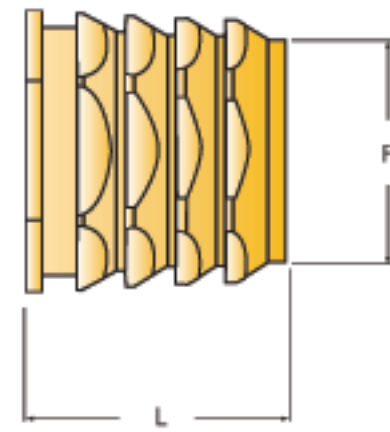
Hand Tools	Ultrasonics
Simple Press	Molded-in
Direct Heat	Fully Automated

### Materials

Stainless Steel	Aluminum
-----------------	----------

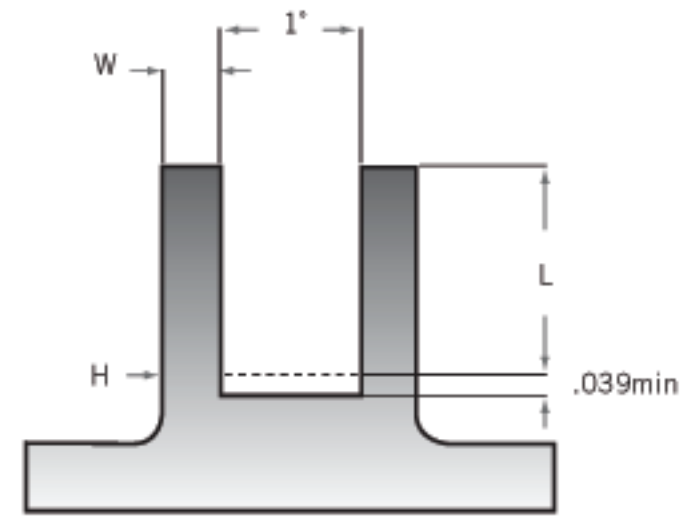
### Insert

# PHZ



### Boss Design Reference

"Press-in Hex Zert" is designed to be installed into a straight hole with a maximum of a 1° inclusive taper. Holes should not be counter sunk or counter bored as this will decrease the fasteners performance. The recommended hole size applies at the point reached by the bottom of the insert. Hole size tolerance  $-0.000 + 0.003$  inches. When using heat to install the inserts the heat should be sufficient to soften the plastic without it melting. This will allow for optimum performance without causing flash or degrading the plastic. Available In Stainless Steel, Brass, and Aluminum. (other materials may be available on request)



PHZ Press-in Hex Zert

## Press-in Hex Zert Size Chart

Inch

Thread	L Insert Length	D Hex Dimension	P Pilot End Dia.	H Hole Size (+0.003 -0.000)	W Min. Wall Thickness	Part Number
2 - 56	.230	.187	.186	.187	.157	PHZ - 256 - 230
4 - 40	.230	.187	.186	.187	.157	PHZ - 440 - 230
6 - 32	.230	.187	.186	.187	.157	PHZ - 632 - 230
8 - 32	.265	.250	.243	.250	.188	PHZ - 832 - 265
10 - 24	.265	.250	.243	.250	.188	PHZ - 1024 - 265
10 - 32	.265	.250	.243	.250	.188	PHZ - 1032 - 265
1/4 - 20	.313	.312	.300	.312	.219	PHZ - 2520 - 313
5/16 - 18	.365	.375	.365	.375	.288	PHZ - 3118 - 365

(All dimensions in inches)

Metric

Thread	L Insert Length	D Hex Dimension	P Pilot End Dia.	H Hole Size (+0.08 -0.00)	W Min. Wall Thickness	Part Number
M3	5.84	4.75	4.75	4.70	4.00	PHZ - M3 - 5.84
M3.5	5.84	4.75	4.75	4.70	4.00	PHZ - M3.5 - 5.84
M4	6.73	6.35	6.20	6.35	4.78	PHZ - M4 - 6.73
M5	6.73	6.35	6.20	6.35	4.78	PHZ - M5 - 6.73
M6	8.00	7.92	7.65	7.92	5.59	PHZ - M6 - 8.00
M8	9.27	9.30	9.30	9.53	7.34	PHZ - M8 - 9.27

(All dimensions in millimeters)

\* Add "AL" to the end of the part number for Aluminum  
ex: PHZ-M3-5.84-AL

\* Add "SS" to the end of the part number for Stainless Steel  
ex: PHZ-M3-5.84-SS

PHZ Press-in Hex Zert